

PRINCIPAL PARTNER



PRINCIPAL CORPORATE SPONSOR



PATHWAYS TO PARTNERSHIP

The Ministry of Social Development's Pathway to Partnership multi-year funding plan is welcome news for the social service sector. On the face of it, this initiative is heartening and should bring relief to funded essential services. Discussions are already under way with many services and we look forward to the results of these.

Does this mean that other funding providers can leave the social service sector in the belief that Pathways to Partnership is a panacea? The answer is no. We are hugely grateful to the Ministry, but we will still need you: we will still need funding assistance from local government, other central government funders such as the Lotteries Grant Board, philanthropic grant makers and private individuals who want to make a difference to our shocking statistics on child abuse.

Pathways to Partnership does not currently target an increase in service delivery, rather it is focussed on full funding existing volumes of essential services. In our case, we know that we are doing the best we can with the resources we have, but are still only meeting the needs of 20% of the children and families that most need our help. Pathways to Partnership may offer us more certainly with those already in our service, but will not help us to reach the rest. We are aware of reluctance by some to assist the social service sector on the basis that their help, if given, would absolve the government of one of its fundamental responsibilities and by so doing let them off the hook. Those funders who adhere to this particular view place community services in an extremely vulnerable position. Government has to help and, arguably, should provide more than it does, but government alone is never going to be able to carry the whole funding burden.

The challenge is – government and the community need to jointly define the real priorities and the best responses to them. The result needs to reflect a response right across the continuum, from early intervention to intensive responses to critical need. To do this, government will be asking for more evidence of service effectiveness than it once did. This is a good thing; social services don't exist as employment agencies, we exist to make a difference in the lives of their clients. Requiring us to provide the evidence of this to funders seems only reasonable.

NEW FUNDING RELATIONSHIP WITH CHILD YOUTH AND FAMILY

FHT and CYF have entered into a new level of funding partnership, which recognizes the value of our early intervention service that specifically targets those families at the higher end of the risk continuum. The new arrangement also highlights that our agency has an important role to play in this specialist area and acknowledges the significant expertise and experience built up over almost twenty years and as a result, we are jointly exploring creating an effective response under the Vulnerable Infants strategy.



BUSINESS FORUM

The key event of the year is a business forum to be held on the 19th September, featuring the Honourable Dr. Michael Cullen and the Honourable Bill English, one of which will be the Finance Minister in the new government. This is an opportunity for the business community in particular to gain some understanding of the direction planned. All details, including ticket purchasing can be found on our web site: www.familyhelptrust.org.nz. Peter Townsend, from the Christchurch Chamber of Commerce is our Master of Ceremonies.



Which one of these two men will be the Finance Minister in the next government?

19th September, 12.30-3.15
 Rydges Hotel
 \$95 per head
 \$850 table of 10
 (includes seated 3 course lunch and beverages)

Tickets through FHT website
www.familyhelptrust.org.nz

THE BALL 08

We are delighted to have been selected to receive the proceeds from the Casino sponsored ball Casino Royale Ball to be held on the 23rd August at the Civic Theatre. All details on our web site. www.familyhelptrust.org.nz

RESEARCH PLANS 08/09

Family Help Trust is proud of their ongoing focus on research and evaluation plans. Acknowledgement has been received in the following ways: The two week visit from Glasgow Psychiatrist Dr. Robert Lindsay. We hosted this visit and were pleased to assist Robert with his desire to gain further insights into outcomes for the children of drug addicted mothers, particularly methadone. We have completed and published a best practice report, generously funded by Todd Foundation. This was a joint venture between ourselves and Family Support Services Whanganui Trust and has already led onto a new initiative and two more partners for a national comparative study. Family Help Trust's selection to be featured on the Te Awatea NZ Family Clearinghouse as a Good Practice Programme is another example of our efforts in this area.

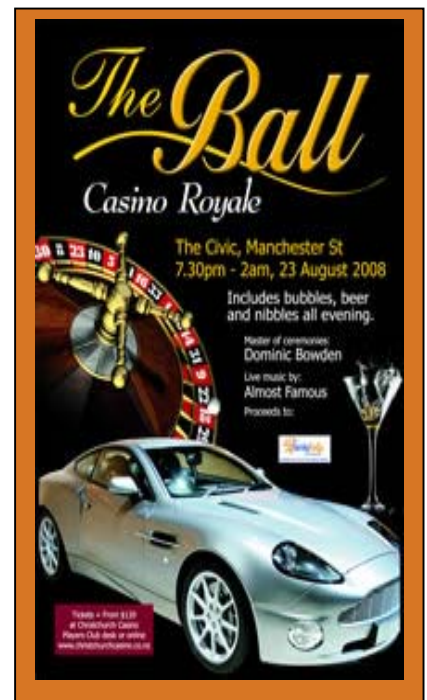


SPONSORSHIP / GIFTS

Special thanks for Christchurch Rotary Club for sponsorship of our new promotional DVD which will be on our website, once we have figured out how to do it! We have been delighted with the public reaction to date and believe it will be a very powerful tool to present our work to interested groups, so please call us if you are interested in receiving a presentation.

Rotary has already gifted us four vehicles, given the recent petrol hikes we are particularly grateful for these gifts. Additional thanks to Rotary and also to Contact Energy for their grant towards our extension study research and their belief that such research is necessary. This work will build on our 2006 outcome study by Dr. Mark Turner. Grateful thanks to Capital Investments for their wonderful gift of a near new wiz bang laser colour Oki printer and several new cartridges. This newsletter is our first printing effort and we are sure will save us a significant amount of precious resources. Many thanks to Claudia our wonderful graphic designer who has gifted herself to us and has enabled us to do new client information brochures, has redesigned this newsletter and the flyers for the business forum. With funds for the community sector becoming less available and more competitive, such gifts are very precious.

The Ball '08
An evening of
elegance and desire



Driving Licences:

We have been emphasising with our families, the importance of being safe and legal drivers, particularly if they are driving around with their children in the car. We were very pleased when we were able to access some funding through Eureka Trust to assist with getting drivers licenses. Over the past 12 months, 18 parents of young children have achieved their learners or restricted license and six of them have gone on to gain their full drivers license. It seems a simple thing but has tremendous spin-offs in general awareness of child safety but also in taking some of these parents out of the criminal justice system. Some have been driving for years without licenses, have accumulated several convictions and heavy fines, so there are economic benefits as well. Those who have never driven before gain a sense of achievement and greater independence. This in turn can open the door to making further changes in their lives.

Bill Pringle, Clinical Service Manager



Published by

THE FAMILY HELP TRUST

1st Floor, 154 Carlyle Street
Sydenham

PO Box 22 126, Christchurch

Ph: (03) 365 9912

Fax: (03) 365 9913

Web:

www.familyhelptrust.org.nz

National Patrons:

Principal Youth Court Judge

AJ Becroft

Lesley Max M.B.E.

DO WE HAVE YOUR EMAIL ADDRESS? WE WANT TO KEEP IN TOUCH WITH YOU...

but we also want to consider our environment and cut down on printing and paper costs. Please take the time to email Jeanette on jeanette@familyhelptrust.org.nz with "email address" as the Subject line. We will forward future newsletters and communications to you via email.